

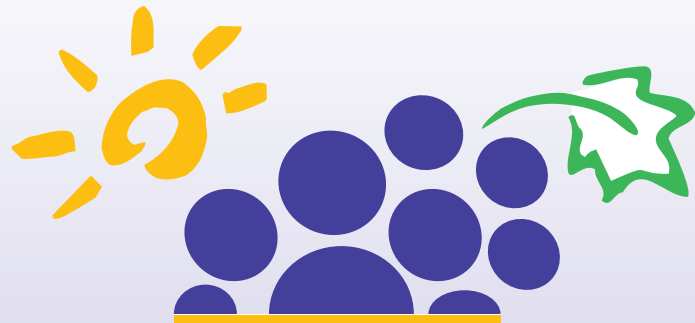


El Dorado County Fair & Event Center  
100 Placerville Drive  
Placerville, CA 95667

A not for profit Organization

**El Dorado County Fair**  
OPEN WINE COMPETITION

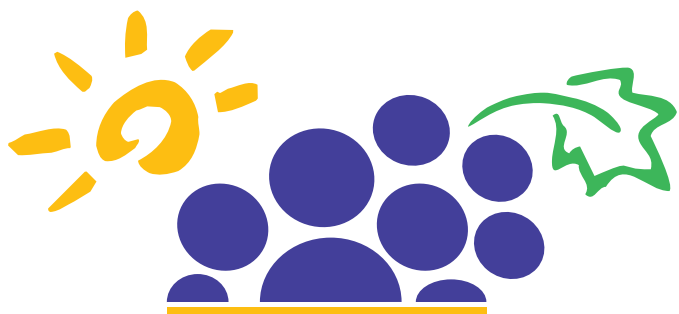
**ENTER TODAY!**



29<sup>TH</sup> ANNUAL  
**El Dorado County Fair**  
OPEN WINE COMPETITION

Sponsored in part by  
**Windfall Media Group**

Entries due on or before May 12  
Questions? Call 530.621.5860



# El Dorado County Fair

## OPEN WINE COMPETITION

### Sparkling Wines

1. Traditional (*Brut, Blanc de Blancs, Blanc de Noirs*)
2. Other Sparkling (*Fruit, Moscato, etc.*)

### White Wines

3. Sauvignon Blanc
4. Pinot Gris/Pinot Grigio
5. Chardonnay \$16.00 and under
6. Chardonnay \$16.01 and higher
7. Riesling
8. Viognier
9. Marsanne/Roussane
10. Semillon
11. Chenin Blanc
12. Other White Rhone Varietals
13. White Rhone Blend – 70%
14. Other Varietal White Wines (*please specify*)
15. White Blends (*please specify*)

### Non-Grape Fruit Wines

16. Any Wine (*please specify fruit*)

### Rosé Wines

17. Rhone Rosé
18. Dry Rosé - .9% RS or lower
19. Rosé -1% RS or higher

### Rhone Wine Description

Wines entered in these categories must contain 70% of one or more of the following Rhone Cepage:

Syrah	Roussane	Mourvedre
Cinsault	Grenache	Muscardin
Counoise	Bourboulenc	Marsanne
Vaccarese	Viognier	Clairette
Terret Noir	Petite Sirah	Carignane

### Red Wines

20. Pinot Noir
21. Zinfandel \$15.00 & under
22. Zinfandel \$15.01 to \$25.00
23. Zinfandel \$25.01 & higher
24. Old Vine Zinfandel
25. Primitivo
26. Sangiovese
27. Barbera \$20.00 & under
28. Barbera \$20.01 & higher
29. Nebbiolo
30. Italian Red Blends or other Italian Red Varietals – 70% (*please specify*)
31. Syrah \$22.00 & under
32. Syrah \$22.01 to \$27.00
33. Syrah \$27.01 & higher
34. Petite Sirah \$20.00 & under
35. Petite Sirah \$20.01 to \$25.00
36. Petite Sirah \$25.01 & higher
37. Mourvèdre
38. Other Red Rhone Varietals
39. Red Rhone Blend – 70%
40. Merlot \$16 & under
41. Merlot \$16.01 & higher
42. Cabernet Sauvignon \$20.00 & under
43. Cabernet Sauvignon \$20.01 to \$30.00
44. Cabernet Sauvignon \$30.01 & higher
45. Cabernet Franc
46. Petit Verdot
47. Malbec
48. Bordeaux Blends  
*Must be two or more of the following varieties: Cabernet Sauvignon, Cabernet Franc, Merlot, Petit Verdot, Malbec, Saint Macaire, Gross Verdot and Carménère (please specify)*
49. Tempranillo
50. Other Varietal Red Wines (*please specify*)
51. Other Red Blends \$15 & under (*please specify*)
52. Other Red Blends \$15.01 & higher (*please specify*)

### Sweet Wines

53. White Dessert
54. Red Dessert
55. Port//Fortified Wine
56. Other Dessert (*please specify*)

# 29<sup>TH</sup> ANNUAL El Dorado County Fair OPEN WINE COMPETITION

Entry forms and wine received at Fair Office:

**DUE BY MAY 12, 2017**

Monday thru Friday 9am to 4pm

Judging: Friday, May 19 at 10am

**AWARDS PRESENTATION  
WITH LIGHT APPETIZERS AND WINE TASTING  
FRIDAY, MAY 19 AT 6PM  
FOLLOWING JUDGING**

*Judging not open to the public*

Purchase tickets at Fair office or on entry form  
(\$10 per person for participating wineries)

## Open to All Commercial Wineries

Thirty prestigious experts from around the country come together to judge these wines each year. Each panel consists of one judge from each industry: Education (winemaker, enologist, professor), Media (newspapers, blogs, radio), Wine Sales (Restaurant, Retail, Hospitality).

*No cash awards • Medals only*

**Entry fee: \$35 per wine thru May 12 (by fax or mail)**

Entries become the property of El Dorado County Fair and will not be returned. Judges will award Double Gold, Gold, Silver, Bronze, as well as Special Awards (*listed to the right*).

All wines received will be stored in a temperature-controlled room prior to judging.

Wine must be bottled under bond by commercial winery. Entries must be commercially labeled. Barrel samples are **NOT** allowed.

Each entry consists of four (4) bottles of wine (750 ml), five (5) bottles of wine (500 ml), or five (5) bottles of wine (375 ml).

## STATE RULES APPLY

100 Placerville Drive, Placerville, CA 95667  
Phone: 530-621-5860 • Fax: 530-295-2566  
Email: [fair@eldoradocountyfair.org](mailto:fair@eldoradocountyfair.org)

Rules and additional forms are available  
at [eldoradocountyfair.org/commercial-wine.html](http://eldoradocountyfair.org/commercial-wine.html)

## Special Awards

### BEST OF SHOW

#### GOLDEN JOHNNY TROPHIES

for the Best of Show red wine,  
Best of Show white wine and  
Best of Show sweet wine

### BEST OF CLASS

awarded to classes with 10 or more entries  
that also include a Gold award or higher.

### BEST RHONE AWARDS

Best red Rhone and best white Rhone

### BEST BARBERA AWARD

### BIODYNAMIC, ORGANIC (EARTH FRIENDLY)

Best red wine and best white wine.

### FRANK HERBERT MEMORIAL AWARD

A perpetual award, sponsored by the  
*El Dorado Wine Grape Growers Association*,  
is offered for the best Zinfandel wine made  
from El Dorado or Fairplay appellation Grapes.

### EL DORADO WINE GRAPE GROWERS AWARD

A special award, sponsored by the *El Dorado Wine Grape Growers Association* for the best commercial wine produced from El Dorado or Fairplay Appellation grapes. This award will be presented to both the winery and the vineyard.

### BEST OF EL DORADO: WINEMAKING

A special award offered for the best wine **produced and bottled** by a winery in El Dorado County.

### BEST OF AMADOR: WINEMAKING

A special award offered for the best wine **produced and bottled** by a winery in Amador County.

### BEST OF PLACER: WINEMAKING

A special award offered for the best wine **produced and bottled** by a winery in Placer County.

### BEST OF LODI: WINEMAKING

A special award offered for the best wine **produced and bottled** by a winery in the Lodi area.

### BACK ROOM GOLD AWARDS

Best Zinfandel, best red wine and best white wine awarded by Back Room staff, a true "People's Choice" award.

